

1. When the cartridge begins to run out of ink it will display dialogue box stating that the ink is running low (**fig 1**). At this point take the ink cartridge out of the printer.

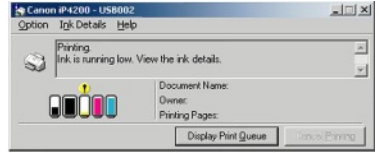


fig.1

2. Remove the chip from the old cartridge. You can either use a tool to slide underneath (**fig 2**) and flip the chip off the cartridge, or you should be able to pop it off using your fingernail (**fig 3**). A twisting action seems to work best for removing the chip from an OEM cartridge.



fig.2

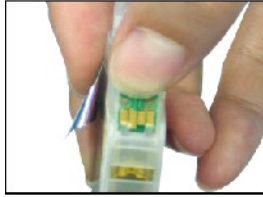


fig.3



fig.4

3. Place the chip into the slot on the corner of the Inkrite cartridge (**fig 4**), and then press down on the chip until it clips into position. Ensure chip is correct way up.

4. Peel the yellow tape off the cartridge and re-install it into the printer.

5. Press and hold the Resume button/Paper feed button for 5 seconds and the print job should commence.

6. After a few more prints another window should appear on screen (**fig 5**) saying that the ink has run out. Click the OK button.



fig.5



fig.6



fig.7

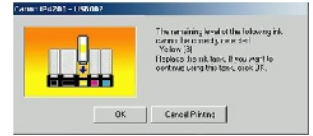


fig.8

7. Read instructions on screen (**fig 6**.) and click the Yes button.

8. Read instructions on screen (**fig 7**.) and click the Yes button.

9. Read instructions on screen (**fig 8**.) and click the OK button.

10. Do NOT click "Back" or "Cancel" when you reach (**fig 9**).



fig.9

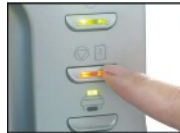


fig.10



fig.11

11. As shown in (**fig 10**), press and hold the paper feed/resume button for 6 seconds.

12. When you release the button the print job will resume, and (**fig 11**) will display that the cartridge is empty even though it will continue to print fine.

NB. The printer will not be able to measure the ink level so it will continue printing even when it has run out of ink. Because of this you will get around 15% extra ink when compared to a Canon original cartridge. When print quality begins to deteriorate, white lines, banding or faded colours appear, just replace the ink tank with a new one (reusing the chip on the cartridge).